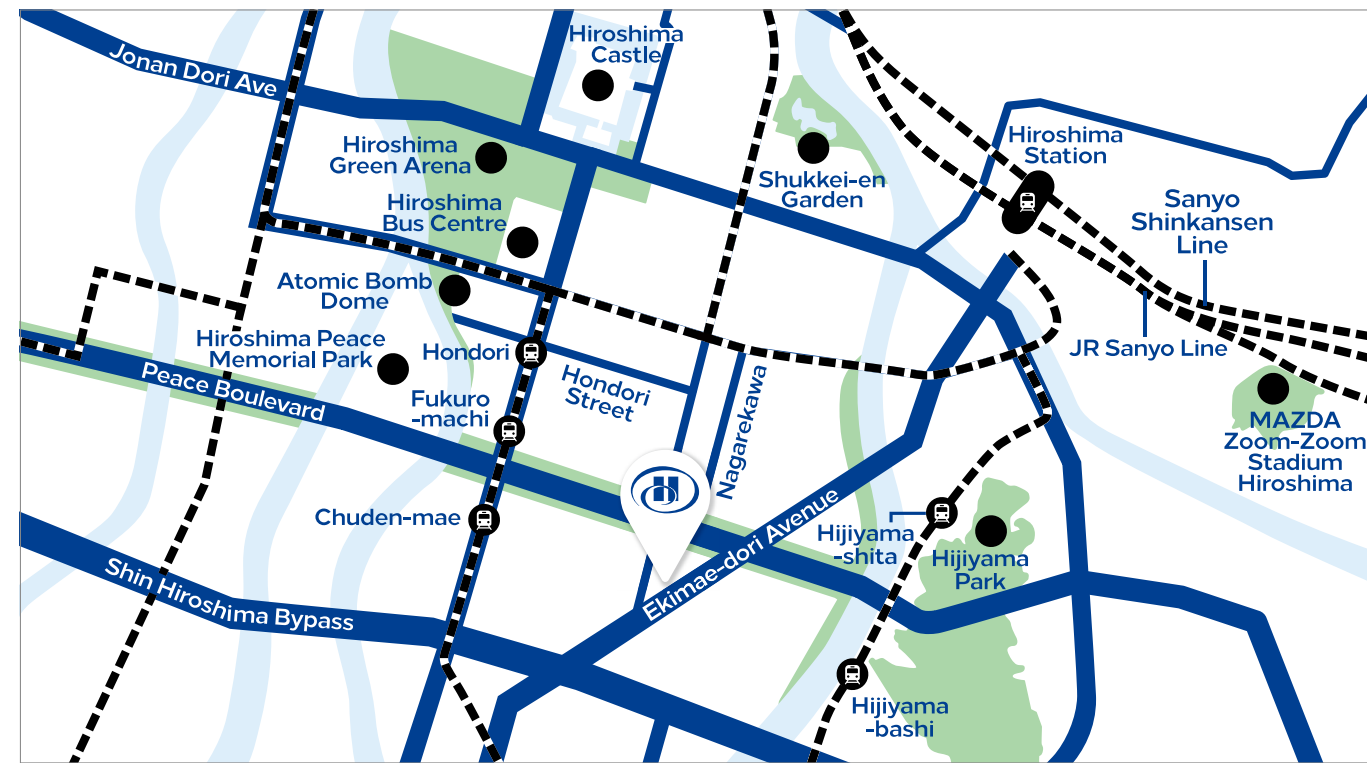




Conferences **And Events**



Welcome To Hilton Hiroshima

Representing the first of Hilton's Flagship Brand to be launched in the Chugoku & Shikoku regions of Japan, Hilton Hiroshima is a stone's throw away from famous UNESCO World Heritage sites such as Atomic Bomb Dome and Peace Memorial Museum.

Hilton Hiroshima is located next to the Peace Boulevard of downtown Hiroshima, giving it great accessibility to major spots for your travel and business purposes. The hotel has 420 guest rooms with interior designs that reflect the natural beauty of Hiroshima. Guests can enjoy internet access in all rooms that overlook the vibrant city or the calm mountain ranges and scenic Seto Inland Sea. In addition to the 4 restaurants and bar, fitness center, spa, and swimming pool, Hilton Hiroshima also has 20 function rooms for hosting anything from small intimate dinners to large scale international events for up to 1,040 guests.

Location

Hiroshima is a hub for the Chugoku & Shikoku regions, acting as its economical center and housing two of its major UNESCO World Heritage sites. Hiroshima is an important historical and cultural representative of the region. Being situated between Osaka and Fukuoka with the Seto Inland Sea in the south and the scenes of the vibrant city skylines with the mountain ranges of the Chugoku region in the north, Hilton Hiroshima is located in the center of downtown Hiroshima and is only 10 minutes by car from Hiroshima station. Its excellent location makes it a great spot for your business, leisure and shopping needs. Hiroshima is a 1 hour plane ride away from Tokyo, and 1.5 hours by Shinkansen from the other major cities such as Osaka and Fukuoka.

To and From the Hotel

- Hiroshima station (2km)
10-min by Taxi
- Hiroshima Airport (50km)
50-min by Taxi, Airport Limousine
- Hijiyaama-shita tram station,
Hijiyaama-bashi tram station,
Chuden-mae tram station.
10-min by foot

About the hotel

Guest Rooms

Total 420 guest rooms

- Deluxe Room 144 rooms
(35㎡／Bed size 120×200cm)
- Corner Room 55 rooms
(48㎡／Bed size 135×200cm)
- Premium Room 144 rooms
(35㎡／Bed size 120×200cm)
- Executive Room 61 rooms
(35㎡／Bed size 120×200cm)
- Suites 16 rooms
(71㎡～162㎡／Bed size 180×200cm)

Facilities

- Executive Lounge (22F)
- Fitness Center (5F)
- Pool, Sauna, Jacuzzi (5F)
- Spa Facilities (5F)

Meeting

The function rooms and foyer on the hotel's 2nd and 3rd floors have plenty of natural light that complements the beautiful interior inspired by the nature and traditional handicrafts of Hiroshima. Hilton Hiroshima boasts one of the biggest meeting facilities within the Chugoku & Shikoku regions and is able to support large scale international events. Let our experienced team assist you in your planning to ensure the success of your events.

Restaurants & Bar

- FLOW LOUNGE (1F)
- MOZAIK - All Day Dining (6F)
- SENSUI - Japanese Cuisine (6F)
- ZATTA - Bar & Lounge (6F)

Famous Spots around the hotel

- Atomic Bomb Dome <20-min by foot>
- Peace Memorial Park ／Hiroshima Peace Memorial Museum <15-min by foot>
- Hiroshima Hondori Shopping Street <10-min by foot>
- Hiroshima Castle <10-min by car>
- Hiroshima Toshogu Shrine <10-min by car>
- MAZDA Zoom-Zoom Stadium Hiroshima <10-min by car>
- Itsukushima Shrine <1-hour by car and ferry>
- Yamato Museum <45-min by car>

Check-in/Check-out

Check-in 15:00

Check-out 12:00





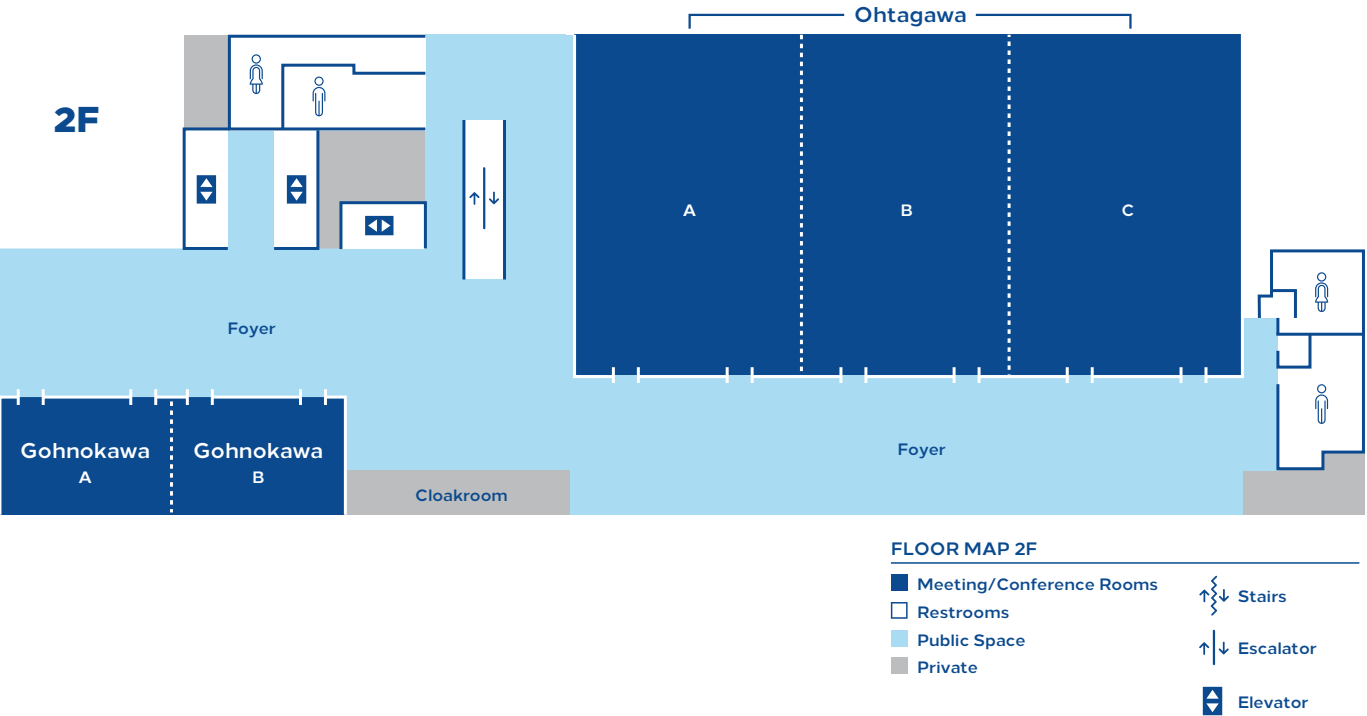
Guest Room

Including its 16 suites, Hilton Hiroshima's 420 guest rooms are located between the 7th and 22nd floor of the building. City view guest rooms look over the vibrant streets of Hiroshima while Nature view guest rooms provide a magnificent view that spans across the mountains and the Seto Inland Sea.

7F-12F Deluxe Floors
13F-18F Premium Floors
19F-22F Executive Floors

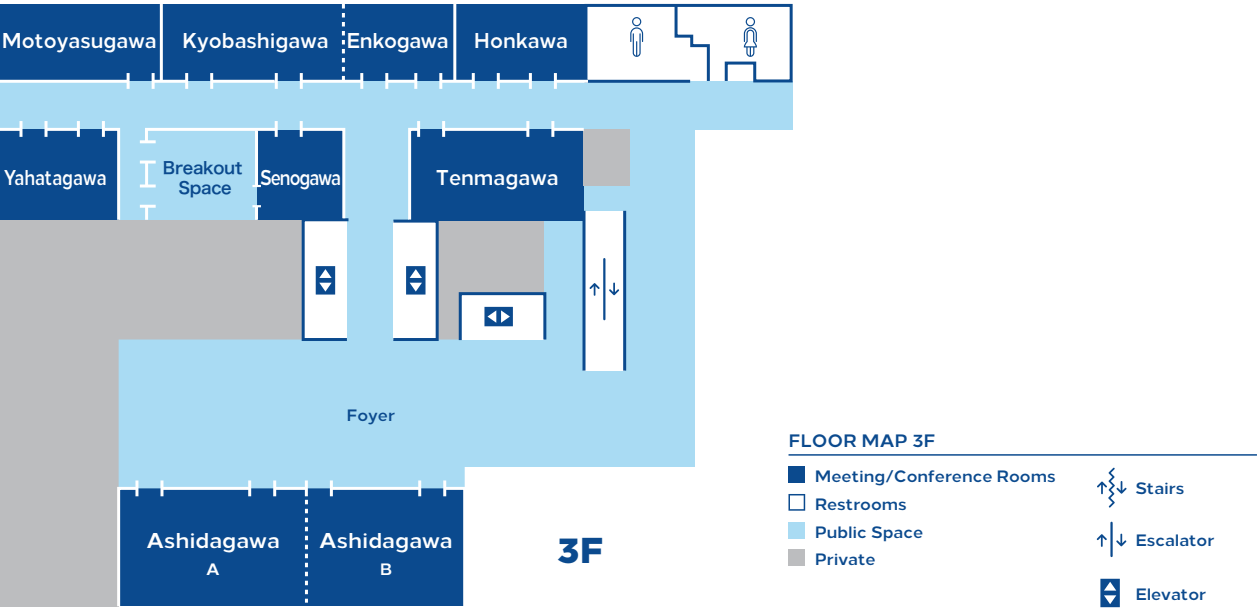
The Executive Lounge is located on the top floor of the hotel (22F). Enjoy afternoon tea and evening cocktails in this spacious and relaxing area, or take your meetings and calls in the semi-private rooms available.

Banquet Highlights



Conference And Event Rooms Capacity Chart

Name	Area (㎡)	Length (m)	Reception	Banquet	School Room	Theatre
Ohtagawa	1,270	7.3	700	1,040	660	1,300
Ohtagawa A	421	7.3	200	300	200	450
Ohtagawa B	434	7.3	200	340	200	480
Ohtagawa C	413	7.3	200	300	200	450
Ohtagawa A+B	855	7.3	400	700	460	900
Ohtagawa B+C	847	7.3	400	700	460	900
Ohtagawa Foyer	564	7.3	-	-	-	-
Gohnokawa	216	4.0	90	120	110	180
Gohnokawa A	108	4.0	40	60	50	80
Gohnokawa B	108	4.0	40	60	50	80
Gohnokawa Foyer	224	4.0	-	-	-	-



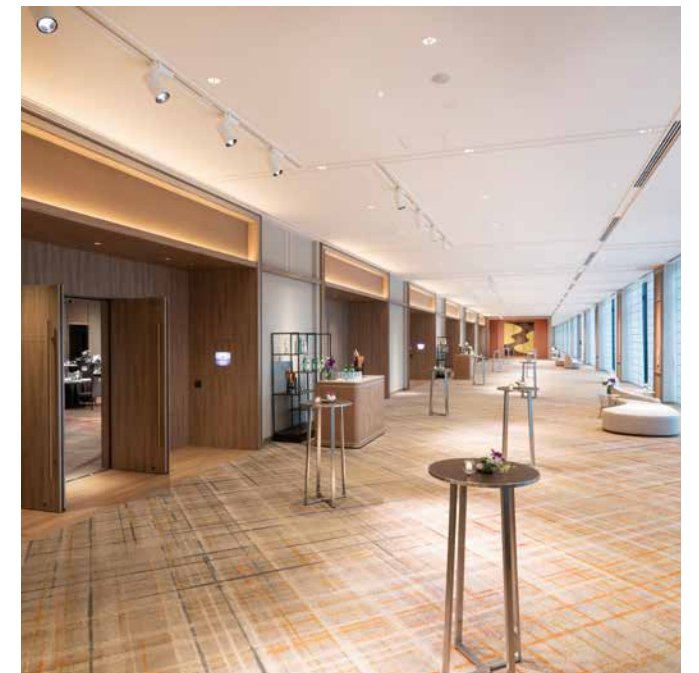
Conference And Event Rooms Capacity Chart

Name	Area (㎡)	Length (m)	Reception	Banquet	School Room	Theatre	Conference
Ashidagawa	209	3.6	80	100	80	160	-
Ashidagawa A	104	3.6	40	60	40	80	-
Ashidagawa B	105	3.6	40	60	40	80	-
Ashidagawa Foyer	363	3.6	-	-	-	-	-
Yahatagawa	46	3.9	20	30	20	40	18
Senogawa	32	3.9	20	30	20	40	12
Tenmagawa	67	3.9	30	40	30	60	24
Kyobashigawa+Enkogawa	126	3.9	40	60	40	80	40
Kyobashigawa	76	3.9	20	30	20	40	24
Enkogawa	46	3.9	20	30	20	40	24
Honkawa	50	3.9	20	30	20	40	24
Motoyasugawa	57	3.9	-	-	-	-	14

Meetings & Events

Large Scale Function Room

The 1,270m² ballroom “Ohtagawa” is one of the biggest function rooms in the Chugoku & Shikoku region. Guests have the flexibility to separate this grand ballroom into 3 separate venues, making way for large international events and exhibitions. The function rooms are furnished with the latest AV equipment, and LED lighting and projection mapping setup to suit all your needs. The foyer can also be used for cocktail receptions, coffee breaks and extra space for exhibiting booths etc.





Medium Scale Function Rooms

These function rooms are serene with the natural light that comes in through the windows installed on one end. The 209m² function room can accommodate 80 - 90 guests for banquets, or more than 100 guests in the cocktail setting. These function rooms on the 2F and 3F are versatile, turning from party rooms to meeting rooms to even major boardroom meetings. These function rooms make transitioning and moving between scenes smooth and easy.



Restaurants & Bar

MOZAIK - All Day Dining (6F)

MOZAIK is the hotel's all-day dining restaurant, where local ingredients are stylishly elevated with international flavors through breakfast, lunch and dinner buffets, or high-quality a la carte options. Hilton's locally renowned sweets buffet will also be served on weekends.

SENSUI - Japanese Cuisine (6F)

SENSUI draws from the region's best quality local produce to offer Sushi, Teppanyaki, and Kaiseki to guests. Helmed by chef Takagi, owner of renowned Michelin two-starred restaurant in Hyogo prefecture, the sophisticated and serene space designed with organic woody textures offers the ideal setting for special occasions.

ZATTA - Bar & Lounge (6F)

In partnership with Mr. Rogerio Igarasi, owner and chief bartender of renowned bar TRENCH, No. 25 in Asia's 50 Best Bars 2022, ZATTA is where guests will want to be to enjoy the best of Hiroshima nightlife with live entertainment. ZATTA's stunning interior design and contemporary ambiance sets the scene for a night to remember.

FLOW LOUNGE (1F)

Located next to the lobby, the FLOW LOUNGE is the perfect place for guests to get together and socialize regardless of the occasion - whether over freshly brewed coffee and pastries in the morning, healthy and hearty dishes during lunch, artisanal sweets in the afternoon, or after-work drinks with locally sourced and produced tapas in the evening.





Hilton Hiroshima

11-12 Fujimicho, Naka-ku, Hiroshima 730-0043

T: +81 (0)82-243-2700 | F: +81 (0)82-243-2777

E: HIJSH_Hotel@hilton.com

hiltonhiroshima.jp | hiroshima.hilton.com