



Hilton Hiroshima is the first flagship hotel of the Hilton brand to be launched in the Chugoku & Shikoku regions of Japan. Located close to the Peace Boulevard in Hiroshima city, Hilton Hiroshima is only a 10-minute drive from Hiroshima station. It serves as a great tourism & business hub being surrounded by restaurants & shops, and has quick access to several UNESCO World Heritage sites such as Atomic Bomb Dome and Peace Memorial Park as well as Itsukushima Shrine.

The 420 guest rooms in Hilton Hiroshima are beautifully designed to reflect the natural beauty of Hiroshima. All rooms are equipped with high speed internet access whilst overlooking the vibrant Hiroshima city and the magnificent view of the Seto Inland Sea. Including the 163sqm suite room, the 22-story building offers a total of 16 suite rooms and an Executive Lounge on its top floor.

Hilton Hiroshima has 4 restaurants & bar and a fitness center that includes a gym, an indoor pool, jacuzzi & spa. Together with its experienced team and the latest LED technology and state-of-the-art AV equipment, Hilton Hiroshima is the perfect location for hosting international events with 20 function rooms that can accommodate more than 1,000 guests.

HILTON HIROSHIMA

10 minutes by car from Hiroshima station

11-12 Fujimicho, Naka-ku, Hiroshima, 730-0043 Japan

T: +81(0)82 243-2700 | F: +81(0)82 243-2777

E: HIJSH_hotel@hilton.com

CONNECT WITH US

f @HiltonHiroshima

@ @Hilton.Hiroshima

AT A GLANCE

- 10 minutes by car from Hiroshima station
- 10 minutes by car from the UNESCO World Heritage site Atomic Bomb Dome and Peace Memorial Park
- 1-hour flight from Tokyo, within 1.5 hours by Shinkansen from major cities such as Osaka & Fukuoka
- 20 function facilities equipped with the latest LED technology and state-of-the-art AV system
- 4 restaurants & bar, including a Japanese restaurant supervised by a Michelin starred chef
- 420 guest rooms including of 16 suite rooms
- An experienced and multilingual team at your service





OUR ROOMS

Hilton Hiroshima's 420 guest rooms are smartly designed to reflect the natural beauty of Hiroshima. All rooms are equipped with high speed internet access and 55-inch TVs. City view guest rooms look over the vibrant streets of Hiroshima while Nature view guest rooms provide a magnificent view that spans across the mountains and the Seto Inland Sea. Each floor features a corner room that can accommodate up to 4 guests, and 16 suite rooms to suit all your accommodation needs.

Number of rooms: 420
 Number of floors: 22
 Check in/check out: 3pm / 12pm

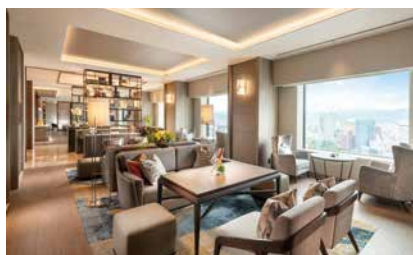


MEETINGS

Function rooms are located on the 2nd and 3rd floor and well endowed with natural light. The interior is iconic with designs inspired by the nature and traditional handicrafts of Hiroshima. Boasting one of the biggest facilities in the Chugoku & Shikoku region, Hilton Hiroshima and its multilingual team makes it the perfect location to host international events.



The 20 function rooms are equipped with the latest LED technology and state-of-the-art AV systems, and its 1,270sqm ballroom houses up to 700 guests in a dinner setting and 1,040 guests for a cocktail reception set up. The pre-function area is also a great space for a cocktail sessions, coffee breaks, event receptions & exhibitions.



OUR FACILITIES

Executive Lounge

Located on the 22nd floor of the hotel, the Executive Lounge is exclusive to guests staying in suite rooms & Executive floor guest rooms. The spacious 250 sqm lounge can be used for dining, lounge and meeting purposes. Guests can enjoy the Hiroshima landscape while having breakfast and cocktails in the lounge.



Fitness & Spa

The fitness center is located on the 5th floor and consists of a gym, indoor pool, sauna and jacuzzi. The gym is equipped with the latest Technogym machines while the 20-meter long pool welcomes a generous amount of natural light, giving you an extra boost to rejuvenate your body. The luxurious spa facility operated by world renowned Spa by L'OCCITANE comes with 4 private treatment rooms.

LOCATION

Centrally located in the city of Hiroshima, Hilton Hiroshima is accessible in 10 minutes by car from Hiroshima station. The hotel is convenient for business, leisure & shopping. Hiroshima is only one hour flight from Tokyo, and also accessible via Shinkansen in under 1.5 hours from major cities like Osaka and Fukuoka.

Hiroshima station (2 km)
 Taxi 10 minutes
 Hiroshima Airport (50 km)
 Taxi / Airport Limousine 50 minutes



RESTAURANTS & BAR

FLOW LOUNGE (1F)

Located next to the lobby, the FLOW LOUNGE is the perfect place for guests to get together and socialize regardless of the occasions – whether over freshly brewed coffee and pastries in the morning, healthy and hearty dishes during lunch, artisanal sweets in the afternoon, or after-work drinks with locally sourced and produced tapas in the evening.

MOZAIK - All Day Dining (6F)

MOZAIK is the hotel's all-day dining restaurant, where local ingredients are stylishly elevated with international flavors through breakfast, lunch, and dinner buffets, or high-quality à la carte options. Hilton's locally renowned sweets buffet will also be served on weekends.

SENSUI - Japanese Cuisine (6F)

SENSUI draws from the region's best quality local produce to offer Sushi, Teppanyaki, and Kaiseki to guests. Helmed by chef Takagi, owner of renowned Michelin two-starred restaurant, "Kyoto Cuisine Takagi" in Hyogo prefecture, the sophisticated and serene space designed with organic woody textures offers the ideal setting for special occasions.



ZATTA - Bar & Lounge (6F)

In partnership with Mr. Rogerio Igarashi, owner and chief bartender of renowned bar TRENCH, No. 25 in Asia's 50 Best Bars 2022, ZATTA Bar & Lounge is where guests will want to be to enjoy the best of Hiroshima nightlife with live entertainment. Catering to over 100 guests, and serving afternoon tea, evening cocktails and locally produced sake, ZATTA's stunning interior design and contemporary ambience sets the scene for a night to remember.